

Innovative Leader
In Imaging Solution



Clear Vision

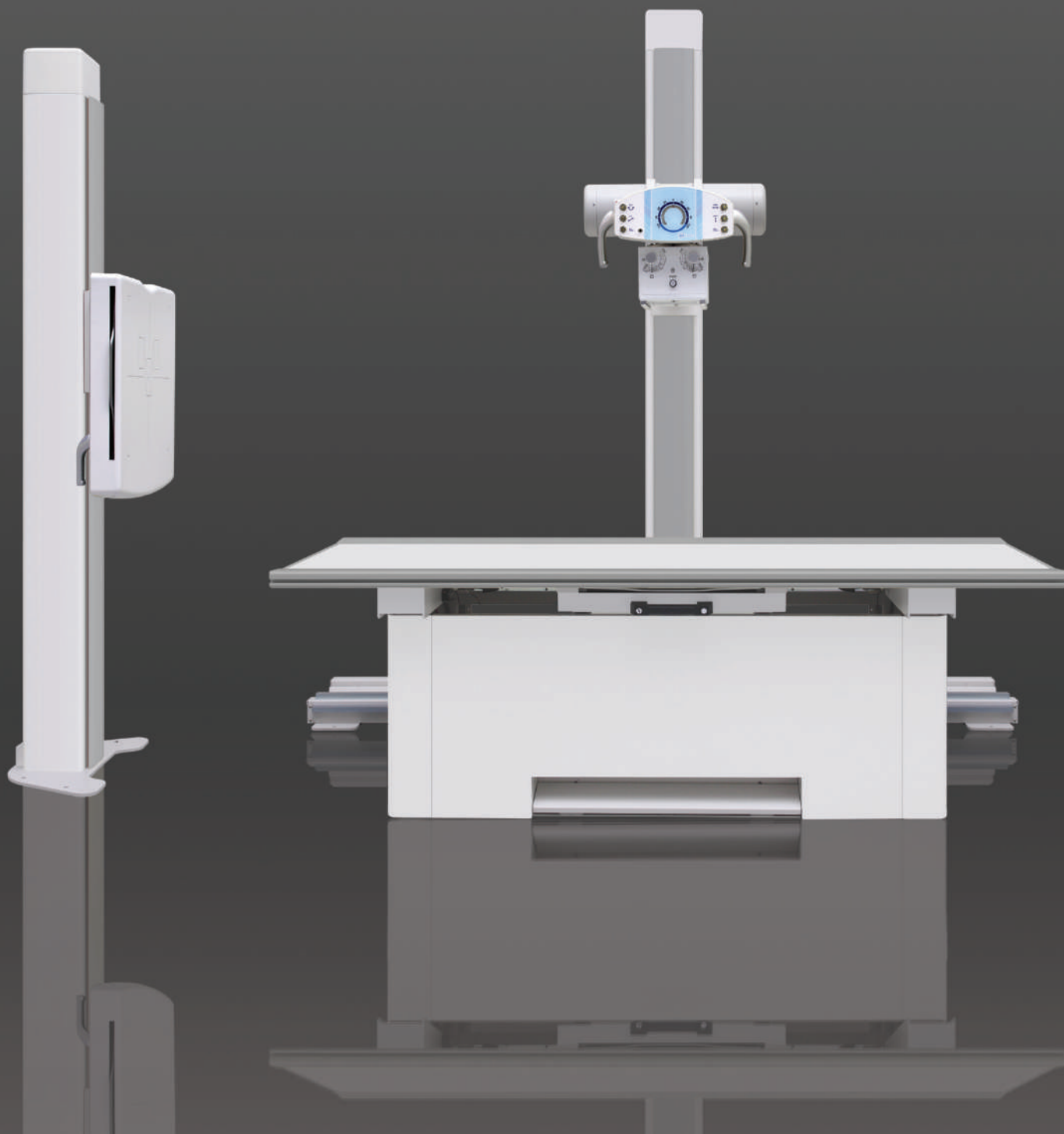
DRE series

Economic Digital Radiography System



Clear Vision **DRE** series

DRE 140 / DRE 150



- **Operation software**

ExamVue software presents a comprehensive set of X-ray image analysis tools through the use of a fast and easy-to-use interface. ExamVue offers high performance image processing and measurement functions.

- **X-ray generator**

High frequency generator ensures minimum patient dose, excellent reproducibility, and superior image contrast.

- **Flat panel detector**

Flat panel detector for digital radiographic applications delivers high sensitivity, high resolution, low noise and superb image quality. Portable flat panel detector provides unlimited clinical applications.

- **Tube stand**

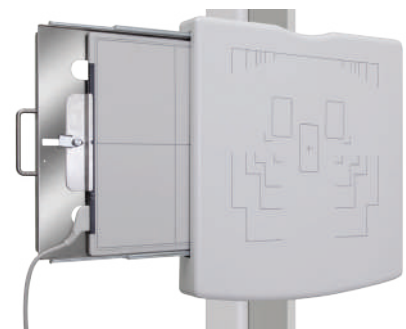
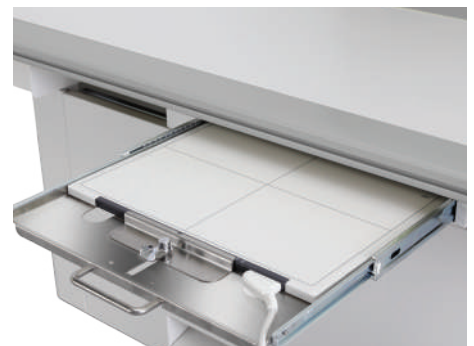
Ergonomically designed tube stand provides the operator with faster and easier movement for table and stand examinations.

- **Bucky stand**

Wide range of vertical travel (400 ~ 1,800mm) allows exposures to be carried out from the cervical spine to the lower extremities.

- **Bucky table**

The robust table design allows the examination of obese patients, with a table weight capacity of up to 150kg. Due to the footswitch integrated into the table base the operator can care the patient safely without any unexpected movement of the tabletop.



The system can be used as a dual 17" X 17" detector system or a single 14" X 17" detector system.

Specifications of the system

Generator	DRE140	DRE150
Max. Output	40kW	50kW
mA range	10 ~ 500mA	10 ~ 630mA
kV range	40 ~ 150kV	40 ~ 150kV
mAs range	0.1 ~ 630mAs	0.1 ~ 630mAs
Power supply	1Ø 220VAC 50/60Hz	3Ø 380VAC 50/60Hz
Exposure time	0.004 ~ 10sec	0.001 ~ 6.3sec
No. of APR	216	1,024
Option	AEC	AEC/ High speed rotor/ DAP

X-ray tube	DRE140	DRE150
Focal spot	1.0/2.0mm	0.6/1.2mm
Anode heat capacity	100kJ (140kHU)	210kJ (300kHU)
Target angle	16°	12°
Voltage range	40 - 125kV	40 - 150kV
Weight	16kg	18kg
Permanent filtration	0.9mmAl	0.9mmAl

Collimator	DRE140/150
Power consumption	24VAC, 7A
Max. kVp shield	150kV
Max. field size	48 x 48cm at SID 100cm
Light projection	more than 160 Lux at SID 100cm
Inherent protection	1.2mm Al equivalent
Radiation protection	less than 30mr/hr at 100cm from x-ray tube focal spot
Lamp timer	push button, 30 second timer

Flat panel detector



Detector

For digital imaging solution, please contact us your sales manager and we will make sure guide you through the process.

Tube stand

Vertical travel distance	1,400mm
Transverse travel distance	2,600mm
Min. Tube height (from floor)	520mm
Max. Tube height (from floor)	1,920mm
Column rotation	±90°
Tube rotation	±180°
Longitudinal travel distance	2,400 ~ 3,000mm (floor ceiling fixed type) 1,500mm (floor fixed type)
Power supply	24VDC, 3A
Weight	245kg (with rails)
Application	DRE140/150



Bucky stand

Vertical travel distance	1,400mm
Min. Bucky height (from floor)	400mm
Max. Bucky height (from floor)	1,800mm
Power supply	1Ø 16 ~ 24VAC 50/60Hz
Weight	105kg
Application	DRE140/150



Bucky table

Table top size	2,000 x 745mm
Table top height	670mm
Table top material	Acryl
Longitudinal Travel distance	±280mm
Transverse travel distance	±140mm
Bucky travel distance	±230mm
Max. patient weight	Max. 150kg
Power supply	1Ø 220VAC 50/60Hz
Weight	180kg
Application	DRE140/150



Types of system



Clear Vision DRE 140/150

- Single Detector (14" X 17" or 17" X 17")

Bucky Stand + Tube Stand system

Configuration

Bucky stand, Tube stand(floor mounted or floor ceiling), Generator, PC&Monitor, Acquire software, Flat Panel Detector, Collimator



Clear Vision DRE 140/150

- Single Detector (14" X 17" or 17" X 17")

Tube Stand + Bucky Table(4way) system

Configuration

4Way Bucky table, Tube stand(floor mounted or floor ceiling), Generator, PC&Monitor, Acquire software, Flat Panel Detector, Collimator



Clear Vision DRE 140/150

- Single Detector (14" X 17" or 17" X 17")
- Dual Detector (14" X 17" or 17" X 17")

Bucky Stand + Tube Stand + Bucky Table(4way) system

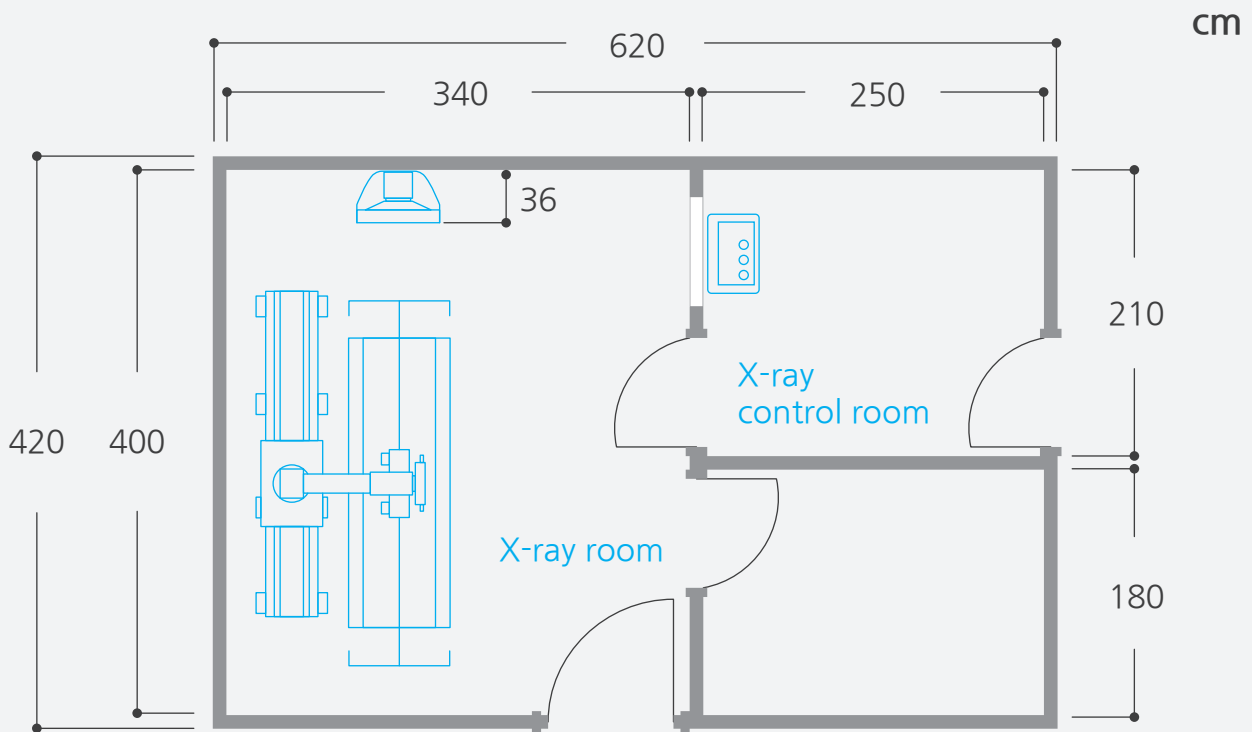
Configuration

4Way Bucky table, Bucky stand, Tube stand(floor mounted or floor ceiling), Generator, PC&Monitor, Acquire software, Flat Panel Detector, Collimator

Configuration of the system

Components	DRE140 with fixed dual FPD	DRE140 with portable FPD (★ with CR/film)	DRE150 with fixed dual FPD	DRE150 with portable FPD (★ with CR/film)
40kW Generator	✓	✓ ✓	-	-
50kW Generator	-	-	✓	✓ ✓
150kV X-ray tube	-	-	✓	✓ ✓
125kV X-ray tube	✓	✓ ✓	-	-
Basic Configuration	★ Tube stand, Bucky stand, Bucky table, PC & monitor, Acquisition Software ★ upgradable to floor mounted Tube stand ★ for international sales			

Recommended installation room layout



This digital radiography system using state of art flat panel detectors allows to take full advantage of the benefits in the modern hospital environments in small budget.



Clear Vision

DRE series

Economic Digital Radiography System

JPI Healthcare Co., Ltd.

📍 608-ho, 28, Digital-ro 33-gil, Guro-gu, 08377, Seoul, Korea

☎ +82.2-2108-2580 📠 +82.2-2108-1180

🌐 www.jpi-korea.com