

Consona N6T
Diagnostic Ultrasound System

Concrete to Resonate



Transducer Family

- Wide clinical application coverage, supports more clinical scenarios
- ComboWave transducers enhance imaging sensitivity

Outstanding Technologies

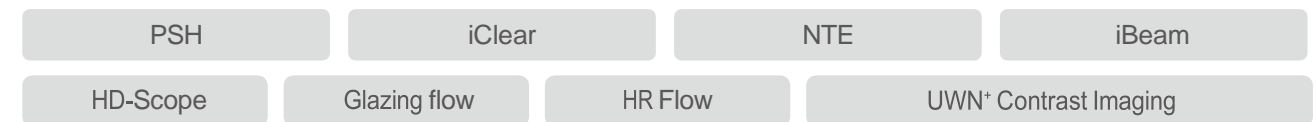
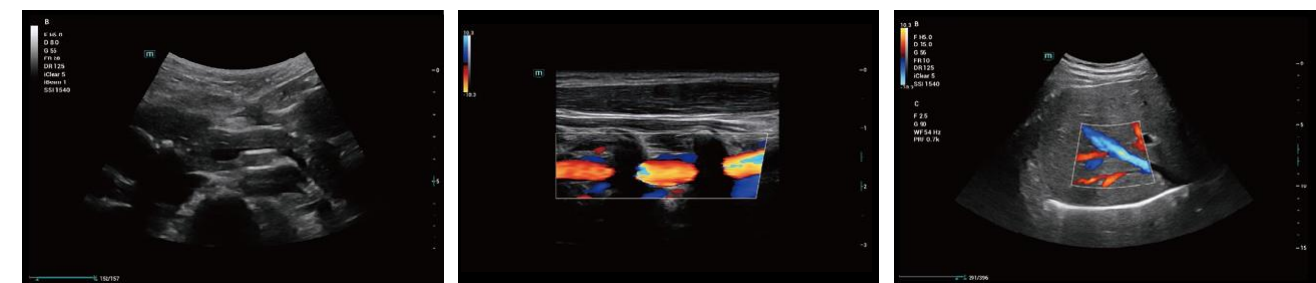


Image Gallery



The Consona features new and concrete solutions, that efficiently help you to carry out smooth diagnoses for extensive types of patients.

No matter your routine is in hospitals, clinics, or you are honing skills, you will find highly powerful and tools available on this series to keep you stay ahead.

Confident

Excellent Image Platform

The ZST+ platform is an extraordinary innovation, representing an ultrasound evolution. Transforming ultrasound metrics from conventional beam-forming to channel data based processing. It delivers exceptional image quality for infinite imaging solutions with non-stop improvements.



Convenient

Comprehensive Clinical Solution

Dedicated to deliver more substantial value in each specific application scenario

General Imaging Solution

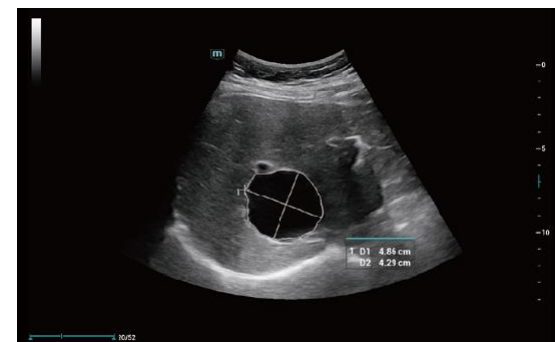
Smart tools for smooth diagnosis





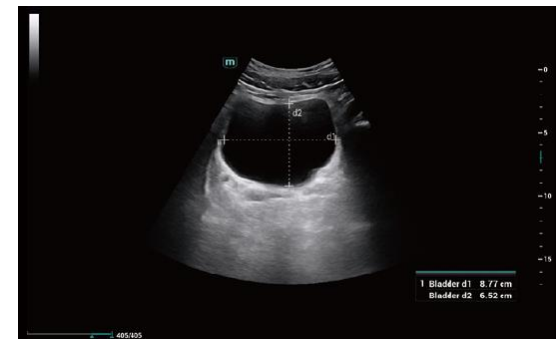
iTouch*

Real-time dynamic image optimization



Smart Calc

Automatic trace, measurement and calculation tool



Smart Bladder

Automatic bladder volume measurement



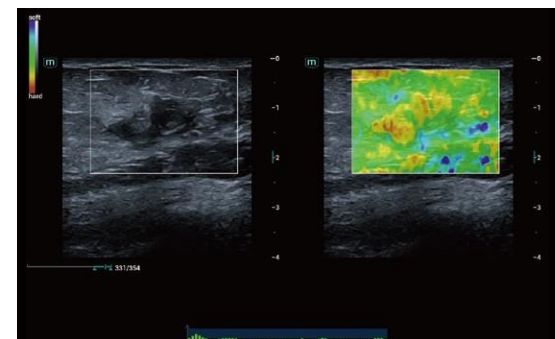
Smart HRI

Automatic HRI index calculation for hepatic steatosis evaluation



HD Scope

Improving the resolution in ROI for easier assessment



NTE

ROI stiffness display with 'Shell' quantitative assessment

Women Health Solution

More care for efficiency and satisfaction



Smart Face

Automatic removal of occlusions over fetal face with one click



Smart OB

Automatic measurement of fetal biometrics



Glazing Flow

Improving the 3D presentation of fetal flow

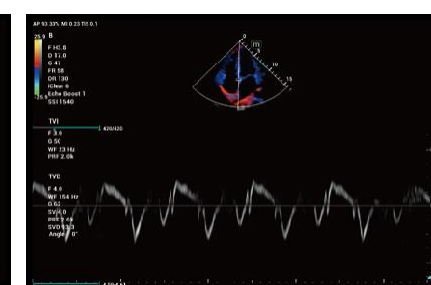
Cardiovascular Solution

Effective cardiovascular evaluation



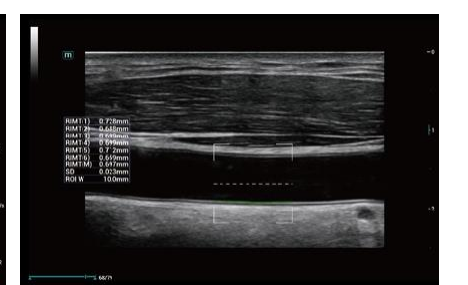
AutoEF

Automatic measurement of Ejection Fraction by diastole/systole frames



TDI

Based on Doppler theory, displays the myocardial movement

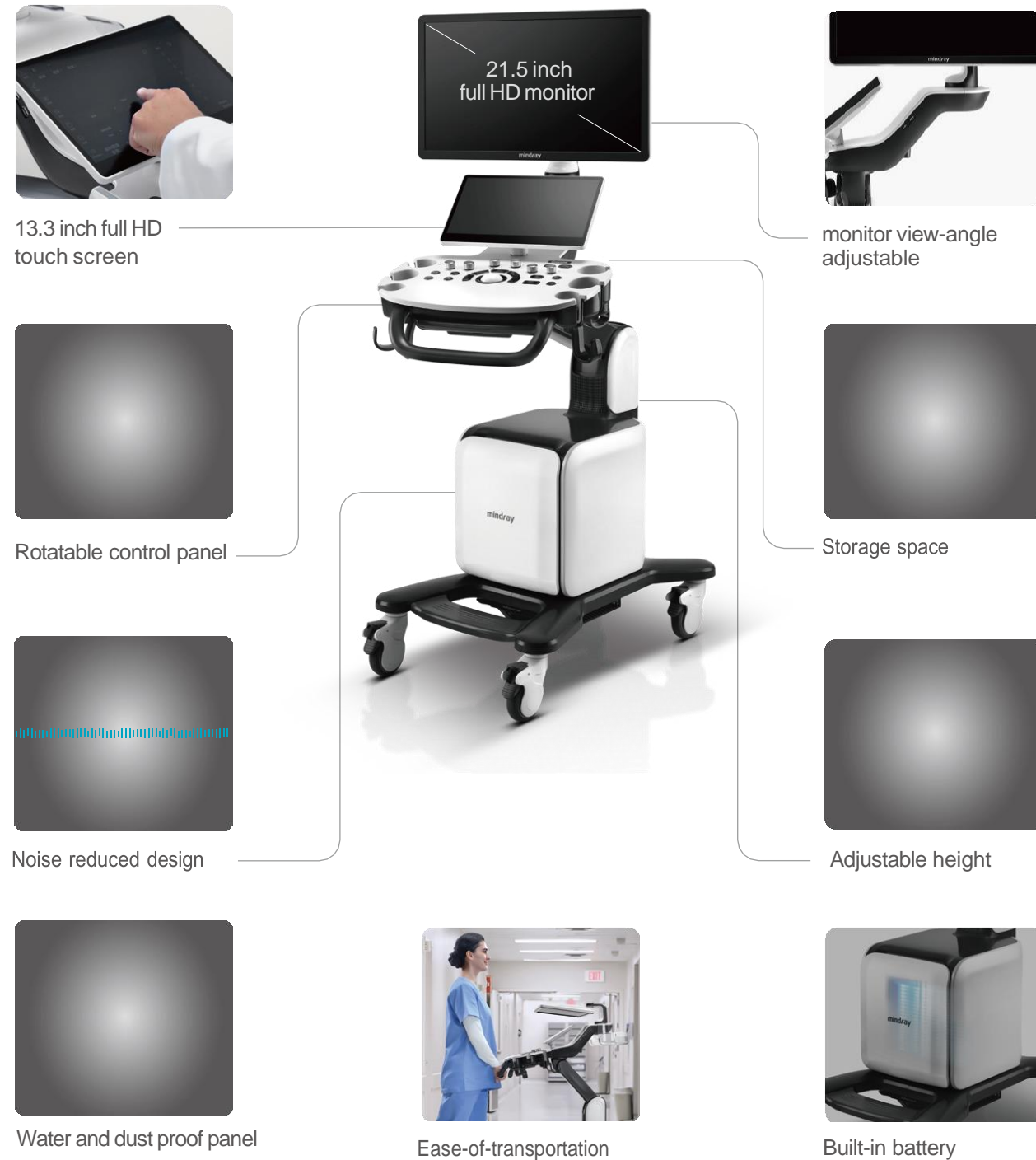


RIMT

RF-data based real-time IMT measurement

Ergonomic Design

Boosts the daily work efficiency. Exquisite machine design brings users better operating experience



Conductive

Inspires the growth by every progressive step

Shortened learning curve with effective professional improvement

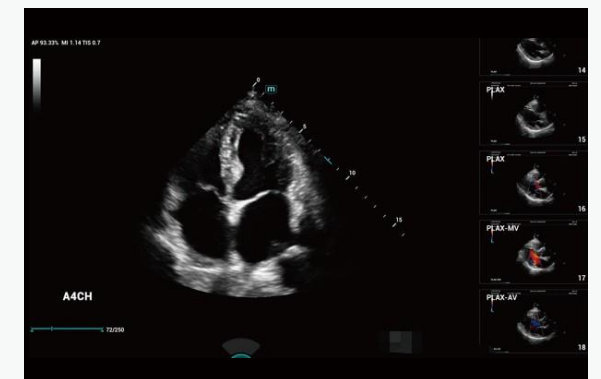
iScanHelper

A scanning tool to practice skills by following the guidance step by step



iWorks

A standardized protocol, scanning step by step without plane omission



Smart Vue

Automatic recognition on standard plane, and restore the standard plane automatically

